

## Features

- Up to five installation and output methods are optional
- New industrial appearance quick installation design, suitable for quick installation
- Imported Heraeus A-level sensor, high precision, fast response, low temperature drift
- With excellent anti-interference ability and protection function, CE certification, IP65, ROHS



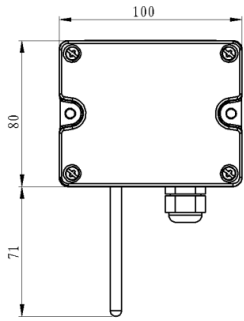
## Description

The LFW10 series temperature transmitter is a sensor specially designed for industrial applications. It is specially designed for lightning surge, electrostatic discharge, group pulse, pressure resistance, etc., and has strong anti-interference ability. There are five installation methods: wall mounted, air pipe/water pipe, split, and clamp. Three output modes of current, voltage, and thermal resistance are optional. Strong on-site trial installation capability. Spring screws and terminal posts are designed for quick installation. It can be widely used in computer rooms, HVAC, buildings, storage and other places where temperature measurement and control are required.

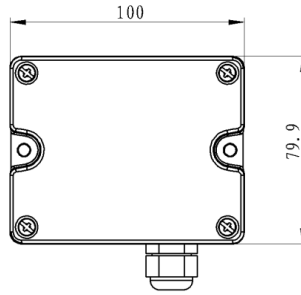
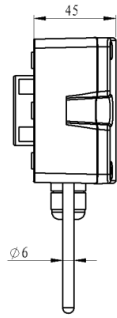
## Specification

Sensor	High-precision thermal resistance, see selection table (resistance output type) / PT1000, Class A (analog output type)	
Output	Resistance, see selection table and thermal resistance indexing table / 4~20mA or 0~10VDC, 0~5VDC	
Thermal Resistance	See selection table and thermal resistance indexing table	
Accuracy	Typical 0.2~0.5°C@25°C, see selection table / $\leq \pm 0.3^\circ\text{C}$ @0~50°C, see accuracy curve for details	
Power Supply	Voltage type 15~35VDC/24VAC $\pm$ 20%	Current type 18.5~35VDC (RL=500 $\Omega$ ) 8.5~35VDC (RL=0 $\Omega$ )
Output Load	(Analog output type) $\leq 500\Omega$ (Current type), $\geq 2K\Omega$ (0~5V), $\geq 3K\Omega$ (0~10V)	
Housing Material	PC housing, stainless steel probe ( $\phi 6\text{mm}$ ) and casing	
Working Temperature	-40~70°C, 0~95%RH(Non-condensing)	
Protection Grade	IP65	

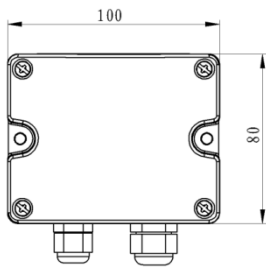
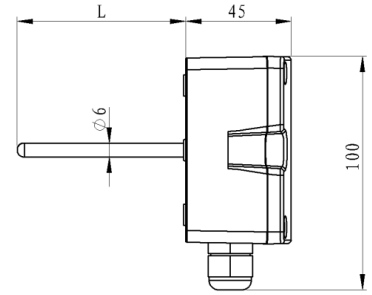
Dimension in: mm



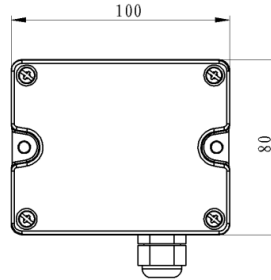
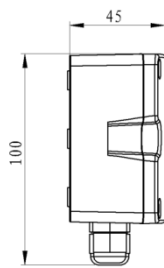
LFW10-1(wall mounted)



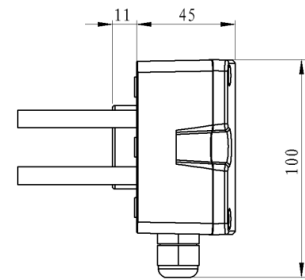
LFW10-2/LFW10-3(ducted type)



LFW10-4(split type)



LFW10-5(clamp type)



## Order Ref NO.

Code and description					Notes
LFW10-1	Wall-mounted temperature transmitter		LFH10-4	Split type temperature transmitter	Model
LFW10-2	Duct type temperature transmitter		LFH10-5	Clamp type temperature transmitter	
LFW10-3	Water pipe type temperature transmitter				
	V1	0~10VDC(Three-wired)	2	NTC20K, ±0.3°C@25°C	Temperature Output
	A4	4~20mA(Two-wired)	3	Ni 1000, ±0.5°C@25°C	
	V5	0~5VDC(Three-wired)	4	NTC10K-II,±0.2°C@25°C	
	0	PT1000, ±0.2°C@25°C	5	NTC10K-III,±0.3°C@25°C	
	1	PT100, ±0.2°C@25°C	6	NTC10K-A,±0.3°C@25°C	
		0	NO		Temperature Range
		1	0~50°C		
		2	-20~60°C		
		8	Others (customer specified)		
		0	65MM		Probe Length LFW10-2/3
		1	100MM		
		2	200MM		
		8	Others (customer specified)		

LFW10-2	2	1	2	Model Selection Example
---------	---	---	---	-------------------------