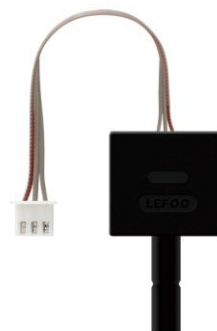


LFT221 Water Pressure Transmitter

FEATURES

- Adopt high-precision ceramic core with good performance
- The product is small and beautiful, and can be installed quickly
- Compact structure with good stability



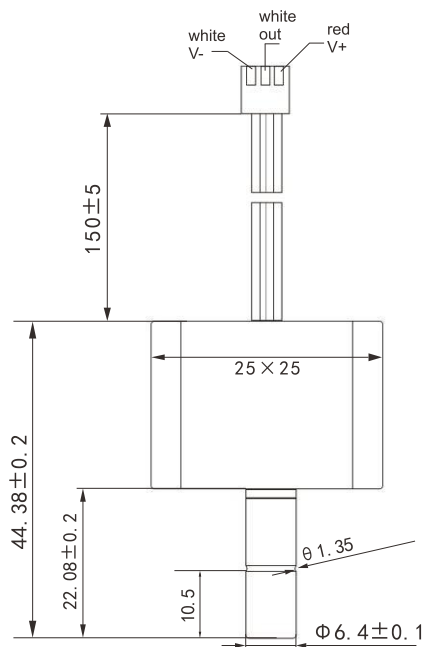
DESCRIPTION

LFT221 water pressure transmitter adopts plastic shell structure, high-precision pressure core, and proportional output voltage signal. This product is mainly used in the water treatment industry and has the characteristics of small size, light weight, compact structure and good stability.

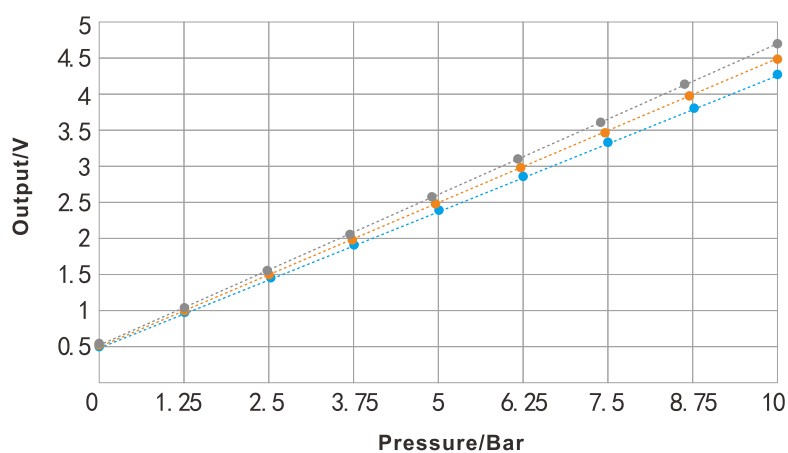
SPECIFICATION

Measurement Range	0~1MPa(Normal pressure section)
Overload Pressure	2 times of rated pressure
Burst Pressure	3 times of rated pressure
Accuracy	±2.0%F.S
Output Mode	Voltage type(3-wired)
Power Supply	4.75~5.25VDC
Output Signal	0.5~4.5V (Proportional output)
Working Temp	0°C~60°C
Storage Temp	-20°C~85°C
Medium	Various fluids without corrosion to PA66, ceramics, EPDM
Load Resistance	≥14.5KΩ
Electrical Connections	3 core 2.54mm spacing Terminal
Enclosure Protection	IP65
Pressure Connection	1/4"PE pipe quick connector

DIMENSION (mm)



OUTPUT CHARACTERISTIC CURVE



● Voltage/4.75V

● Voltage/5V

● Voltage/5.25V

① 4.75V power supply: $V_{out} = 0.38 \cdot P + 0.475$

② 5V power supply: $V_{out} = 0.4 \cdot P + 0.5$

③ 5.25V power supply: $V_{out} = 0.4 \cdot P + 0.525$ Remark: P represents the current pressure, the unit is Bar