

**FEATURES**

- High precision linear stability
- Good reliability and anti-interference performance
- No zero drift, strong anti-interference ability

**SPECIFICATION**

Path	10-500mm
Maximum flow rate	10m/s
Output signal	4-20mA, HART protocol, RS485
Electrical Connections	Terminals
Comprehensive accuracy	1.0级
Fluid conductivity	≥5 μS/cm
Power supply	220VAC, 24VDC
Power consumption	≤20W
Power consumption	10MPa, 6.3MPa, 2.5MPa, 1.6MPa
Ambient temperature	-25°C~60°C
Ambient temperature Carbon steel	stainless steel (304, 316, 316L)
Ambient temperature	IP67
Certification	CE ROHS



**APPLICATION**

- Paper making, refine sugar, mining and metallurgy, drainage, environmental protection
- Water conservancy and hydraulic engineering, iron and steel, petroleum, Pharmaceutical, various beverages
- Petroleum, organic liquid, inorganic liquid, cryogenic fluid

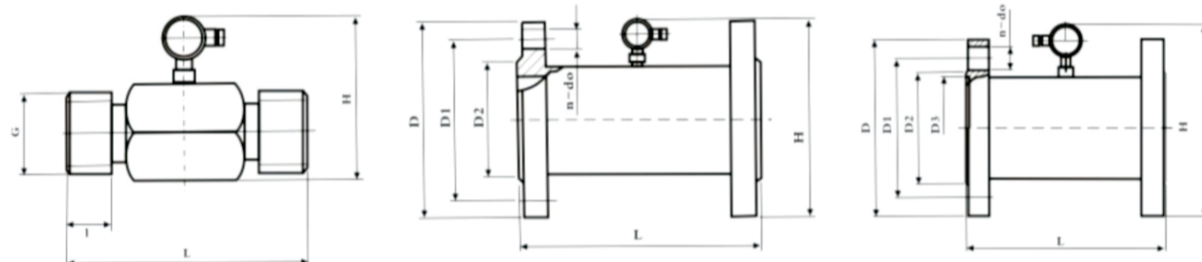
**DIAMETER PARAMETER GAS**

Path (mm)	Flow range (m3/h)	Fluid Temperature Range (°C)		Minimum Allowable Fluid Density (kg/m³)	Nominal Pressure (Mpa)	Accuracy
		One-piece	Explosion-proof			
15	4-16	-20~+55 -20~+100	-20~70	0.6	16	±1.5%
25	8-20					
40	20-100					
50	30-200					

**DIAMETER PARAMETER LIQUID**

Path (mm)	Flow range (m3/h)			Fluid Temperature Range (°C)		Nominal Pressure (Mpa)
	0.2级	0.5级	1.0级	One-piece	Explosion-proof	
10		0.4-1.2	0.2-1.2	-20~+50 -20~+100	-20~70	6.3
15	12-4	0.6-6	0.4-6			2.5
25	3-10	1.2-12	1.2-12			6.3
40	8-25	3-30	3-30			16
50	12-40	5-50	5-50			6.3
80	20-100	16-100	12-120			
100	50-160	25-160	20-200			
150	100-300	50-300	40-400			
200	200-600	100-600	80-800			2.5
250	300-1000	160-1000	120-1200			
300		250-1600				2.5
400		400-2500				
500		600-4000				

**DIMENSION**



Email: [export14@lefoo.com](mailto:export14@lefoo.com)

TEL: +86-18268876736 [www.lefoogroup.com](http://www.lefoogroup.com)

Electromagnetic Flowmeter parameter

**ORDER REF NO.**

Code and description		Type
LFLWGY		Vortex Flowmeter
DN	10 ... 100 ... 500	Diameter
	3 1.6	Nominal Pressure
	4 2.5	
	6 6.3	
	7 10	
	1 Flange connection	Pipe Connection Method
	3 Pipe thread connection	
	5 Clamp type connection	
	2 4-20mA Two wire	Output Signal
	3 Frequency (three-wire system)	
	4 Frequency (two-wire system)	
	6 +24VDC	Power Supply
	7 8-+24VDC	
	1 -20~55	Fluid Temperature (°C)
	2 -20~70	
	3 -20~120	
	1 Stainless steel	Shell Material
	2 Stainless steel and carbon steel flange	
	1 One-piece	Structure Type
	3 Bi-directional	
	8 Plug-in	
	0 Not explosion-proof	Explosion-proof Registration
	2 d II Bt3	
	4 ib II CT3	
	1 1.0	Accuracy Class
LFLWGY-DN50 3 1 2 6 1 1 1 2 1		Selection example

Email: [export14@lefoo.com](mailto:export14@lefoo.com)

TEL: +86-18268876736 [www.lefoogroup.com](http://www.lefoogroup.com)

Electromagnetic Flowmeter parameter