

LFP303/DB DC Motor Peristaltic Pump

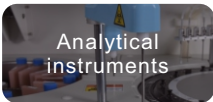
Color X6

FEATURES

- High precision, high stability
- Low noise, suitable for home use
- Long life, durable
- Easy tube replacement without tools



APPLICATION INDUSTRY



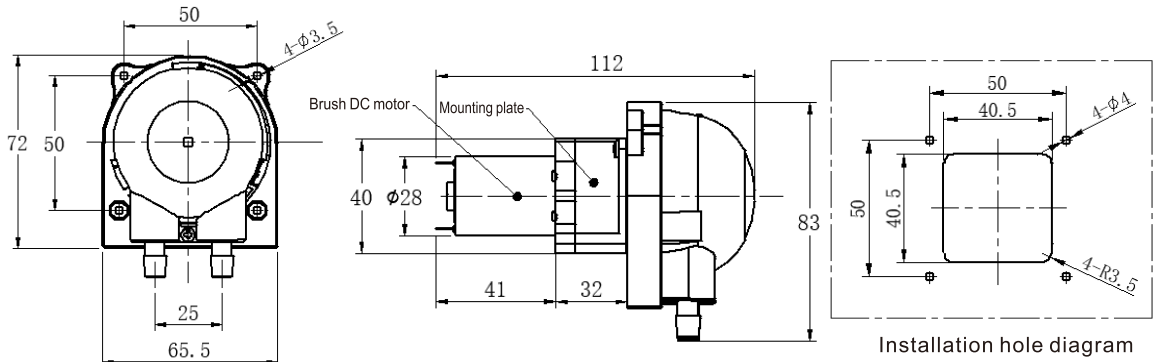
SPECIFICATIONS

Model	Installation Method	Motor Type	Control Method	Function	Working Voltage	Power	Weight	Working Environment	Rollers
P303DB	Built-in mounting hole	Brush DC motor	Power-on operation	Fixed flow rate	DC12V、DC24V	≤8W	170g	Temperature 0-45℃, Relative Humidity <85%RH	Standard with 2 rollers+2 training wheels(4 rollers are available)

FLOW RATE: ml/min

Voltage	Flow Range	Tube Size	Tube Type
DC12V、DC24V	35~80	16#	BPT Tube/Silicone Tube/A60-F/Viton Tube
	70~190	25#	
	100~280	17#	

MOUNTING DIMENSION: mm



Remark  
1. The above flow parameters are tested under the conditions of room temperature 23℃, standard atmospheric pressure, clean water, suction lift 0.2m, lift 0, and no pressure. For reference only.  
2. Pump flow rate can be affected by viscosity, density, medium temperature, ambient temperature, inlet and outlet pressure, suction lift and lift of pump. To ensure the accuracy of the pump, it is necessary to keep the above factors without significant changes.