

LFP302/ST DC Stepper Motor Peristaltic Pump

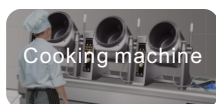
Color X6

FEATURES

- Convenient to start and stop, adjustable speed, positive reverse
- Low noise, quiet and stable
- Support PLC control, 485 Communication
- Installation method can be customized



APPLICATION INDUSTRY



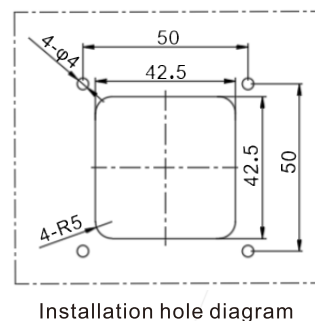
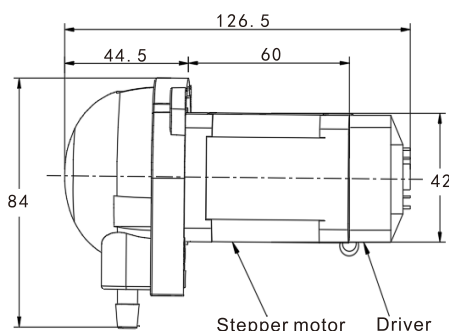
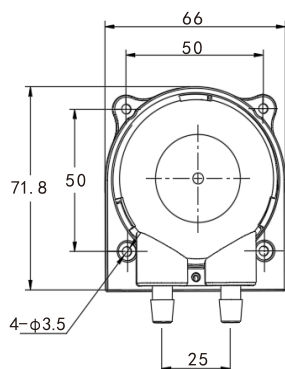
SPECIFICATIONS

Model	Installation Method	Motor Type	Control Method	Function	Working Voltage	Power	Weight	Working Environment	Rollers
P302ST	Built-in mounting hole	Stepper motor	Driver control (Option with Driver and PLC control)	Precise adjustable flow control	DC24V	≤12W	640g	Temperature 0-45°C, Relative Humidity <85%RH	Standard with 2 rollers+2 training wheels(4 rollers are available)

FLOW RATE: ml/min

Voltage	Flow Range	Tube Size	Tube Type
DC24V	1~160	16#	BPT Tube/Silicone Tube/A60-F/Viton Tube
	1~330	25#	
	1~420	17#	

MOUNTING DIMENSION: mm



Remark

- The above flow parameters are tested under the conditions of room temperature 23°C, standard atmospheric pressure, clean water, suction lift 0.2m, lift 0, and no pressure. For reference only.
- Pump flow rate can be affected by viscosity, density, medium temperature, ambient temperature, inlet and outlet pressure, suction lift and lift of pump. To ensure the accuracy of the pump, it is necessary to keep the above factors without significant changes.