

## LFP104/DB DC Motor Peristaltic Pump

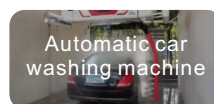
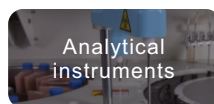
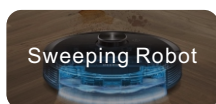
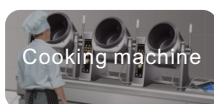
Color X6

### FEATURES

- Ultra-low noise, suitable for various environments
- Planetary reduction transmission, stable speed
- Anti-reversal and fall-off design
- Easy replacement without required



### APPLICATION INDUSTRY



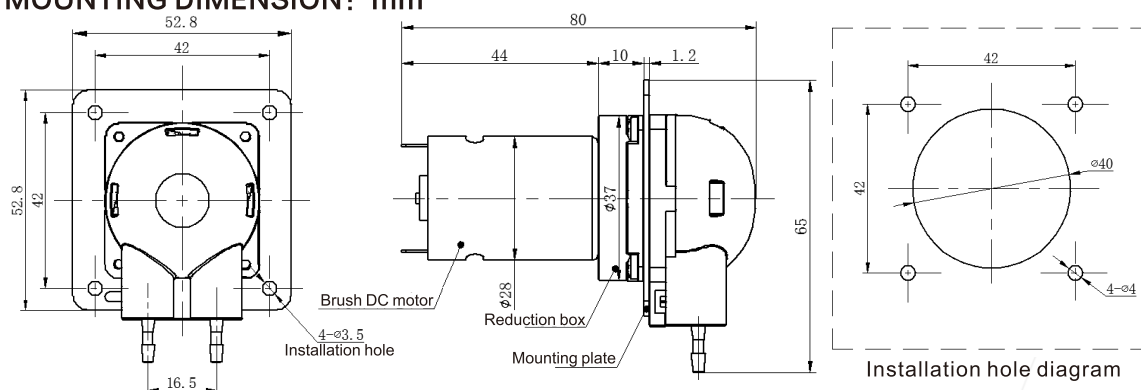
### SPECIFICATIONS

Model	Installation Method	Motor Type	Control Method	Function	Working Voltage	Power	Weight	Working Environment	Rollers
P104DB	Stainless steel mounting plate as standard (customizable)	Brush DC motor	Power-on operation	Fixed flow rate	DC12V、DC24V	≤8W	114g	Temperature 0-45°C, Relative Humidity <85%RH	Standard with 3 rollers

### FLOW RATE: ml/min

Voltage	Flow Range	Tube Size	Tube Type
DC12V、DC24V	12~35	1*3	BPT Tube/Silicone Tube/A60-F/Viton Tube
	40~106	2*4	
	80~190	3*5	
	160~270	4*6	

### MOUNTING DIMENSION: mm



#### Remark

1. The above flow parameters are tested under the conditions of room temperature 23°C, standard atmospheric pressure, clean water, suction lift 0.2m, lift 0, and no pressure. For reference only.
2. Pump flow rate can be affected by viscosity, density, medium temperature, ambient temperature, inlet and outlet pressure, suction lift and lift of pump. To ensure the accuracy of the pump, it is necessary to keep the above factors without significant changes.