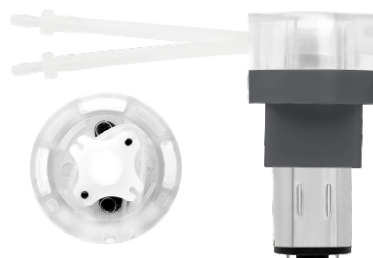


LFP101A/DB DC Motor Peristaltic Pump

Color X6

FEATURES

- Micro flow rate design
- Compact structure, mini size, light weight, fine workmanship
- Low noise, smooth running, suitable for gap operation
- Installation method can be customized



APPLICATION INDUSTRY



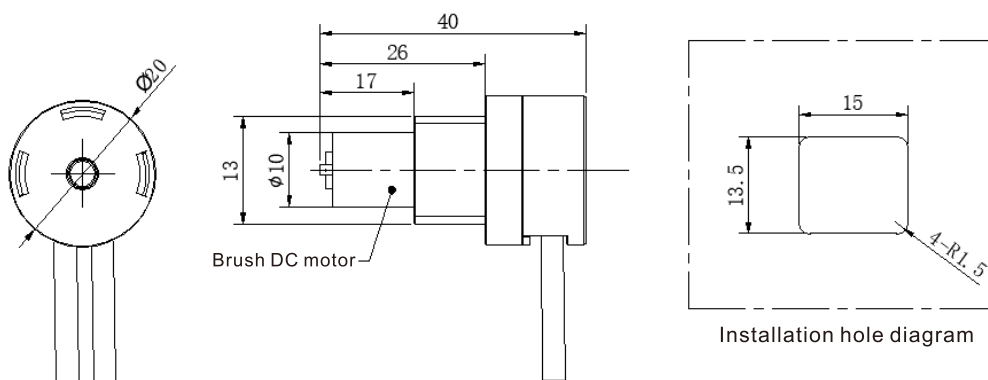
SPECIFICATIONS

Model	Installation Method	Motor Type	Control Method	Function	Working Voltage	Power	Weight	Working Environment	Rollers
P101ADB	Rubber mounting plate (optional)	Micro brush reduction motor	Power-on operation	Fixed flow rate	DC3V、DC6V、DC12V	≤2W	13g	Temperature 0-45°C, Relative Humidity <85%RH	Standard with 2 rollers

FLOW RATE: ml/min

Voltage	Flow Range	Tube Size	Tube Type
DC3V、DC6V、DC12V	0~0.3	0.5*1.5	BPT Tube/Silicone Tube
	0.3~1.2	1*2	
	0.6~2	1.5*2.5	

MOUNTING DIMENSION: mm



Remark

1. The above flow parameters are tested under the conditions of room temperature 23°C, standard atmospheric pressure, clean water, suction lift 0.2m, lift 0, and no pressure. For reference only.
2. Pump flow rate can be affected by viscosity, density, medium temperature, ambient temperature, inlet and outlet pressure, suction lift and lift of pump. To ensure the accuracy of the pump, it is necessary to keep the above factors without significant changes.