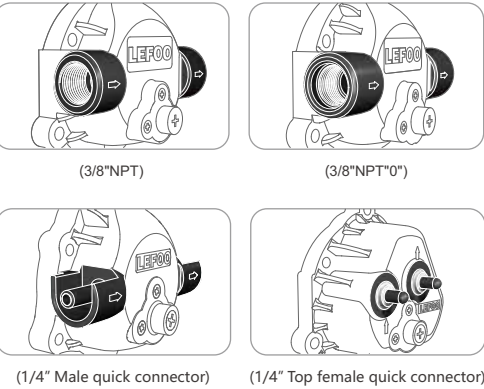


LFP150 SERIES

Diaphragm Booster Pump

Connection



Product Specifications

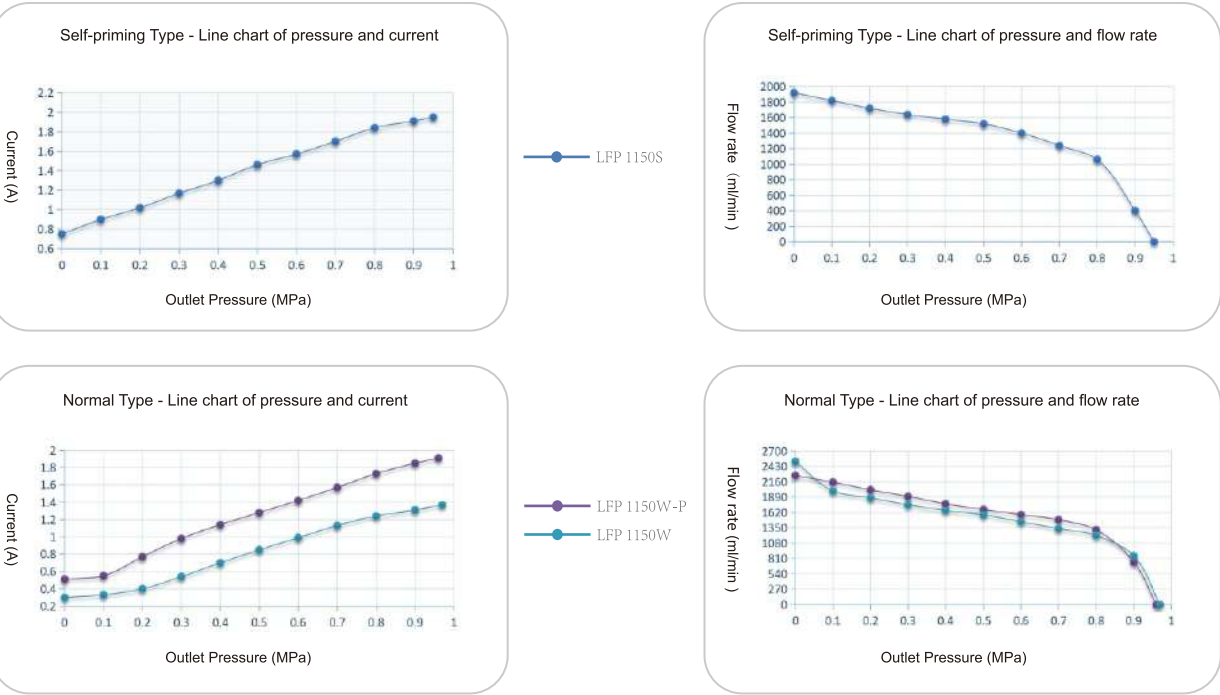
① Self-priming type

Model	Voltage	Inlet Water Pressure	Working Pressure	Working Current	Working Flow Rate	Open Flow	Bypass Pressure	Maximum Current	Self-priming Height
LFP1150S	24V DC	0MPa	0.5MPa	≤2.1A	≥1450mL/min	≥1800mL/min	0.8-1.0MPa	≤2.8A	≥3.0m

② Normal type

Model	Voltage	Inlet Water Pressure	Working Pressure	Working Current	Working Flow Rate	Open Flow	Bypass Pressure	Maximum Current	Self-priming Height
LFP1150W-P	24V DC	0.2MPa	0.5MPa	≤1.5A	≥1500mL/min	≥2000mL/min	0.85-1.0MPa	≤2.2A	/
LFP1150W						≥2200mL/min		≤2.0A	

Flow Curve



Mounting Dimension: mm

