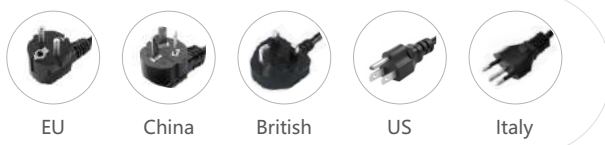
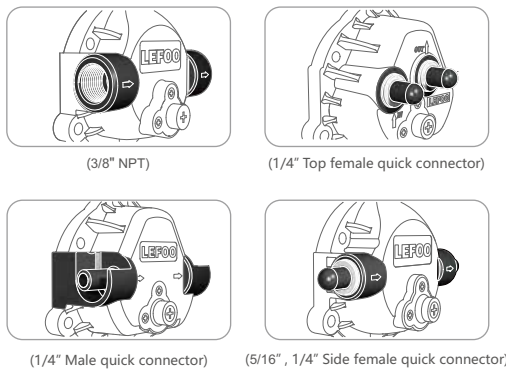


# LFP50-150/230V SERIES

AC Diaphragm Booster Pump •



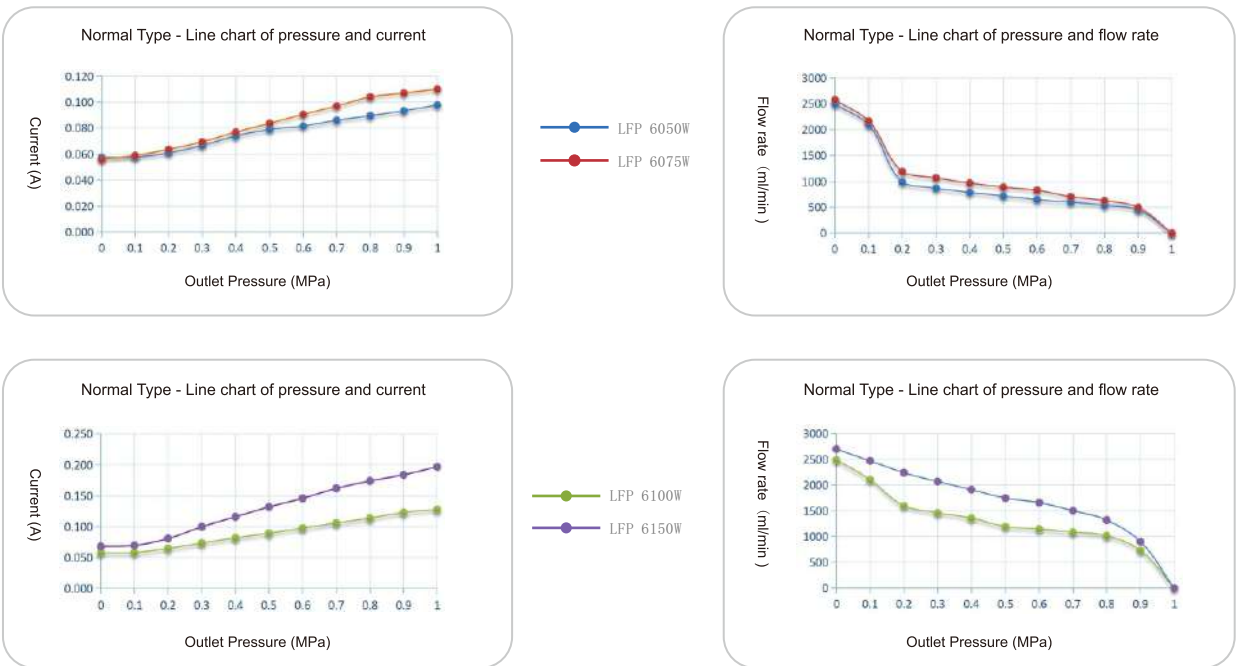
Connection



Product Specifications

Model	LFP6050W	LFP6075W	LFP6100W	LFP6150W
Voltage	230V AC			
Inlet Water Pressure	0.2MPa			
Working Pressure	0.5MPa			
Working Current	≤0.13A	≤0.14A	≤0.16A	≤0.20A
Working Flow Rate	≥600ml/min	≥750ml/min	≥980ml/min	≥1500ml/min
Open Flow	≥1600ml/min	≥1800ml/min	≥2000ml/min	≥2200ml/min
Bypass Pressure	0.85-1.0MPa			
Maximum Current	≤0.24A	≤0.24A	≤0.28A	≤0.28A

Flow Curve



Mounting Dimension: mm

